



# ANNIVERSARY 16763A



## **ANNIVERSARY 16763A** Model number: 31ANN16763AH18

**3 beds • 2 baths • 1216 sq.ft. • 16' width • 76' depth**

Our home building facilities invest in continuous product and process improvements. Plans, dimensions, features, materials, specifications and availability are subject to change without notice or obligation. Renderings and floor plans are representative likenesses of our homes and may differ from the actual homes. We invite you to tour a Home Center near you and inspect the highest value in quality housing available or call (281) 351-5856 to speak with a Home Consultant. Copyright 2017, CMH. All rights reserved.

<https://www.claytonhomestomball.com>

**CLAYTON HOMES-  
TOMBALL**

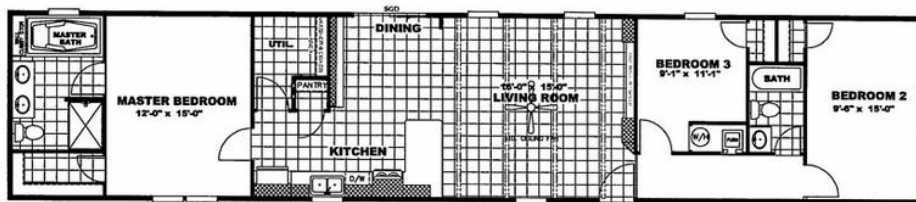
**27225 TOMBALL PKWY  
TOMBALL, TX 77375**

Monday - Thursday: 9am - 7pm  
Friday: 9am - 6pm  
Saturday: 9am - 5pm  
Sunday: Closed

(281) 351-5856



# ANNIVERSARY 16763A



## ANNIVERSARY 16763A Model number: 31ANN16763AH18

**3 beds • 2 baths • 1216 sq.ft. • 16' width • 76' depth**

Our home building facilities invest in continuous product and process improvements. Plans, dimensions, features, materials, specifications and availability are subject to change without notice or obligation. Renderings and floor plans are representative likenesses of our homes and may differ from the actual homes. We invite you to tour a Home Center near you and inspect the highest value in quality housing available or call (281) 351-5856 to speak with a Home Consultant. Copyright 2017, CMH. All rights reserved.

<https://www.claytonhomestomball.com>

### CLAYTON HOMES- TOMBALL

27225 TOMBALL PKWY  
TOMBALL, TX 77375

Monday - Thursday: 9am - 7pm  
Friday: 9am - 6pm  
Saturday: 9am - 5pm  
Sunday: Closed

(281) 351-5856