



THE ANNIVERSARY 3.0



THE ANNIVERSARY 3.0 Model number:

3 beds • 2 baths • 1580 sq.ft. • 28' width • 60' depth

Our home building facilities invest in continuous product and process improvements. Plans, dimensions, features, materials, specifications and availability are subject to change without notice or obligation. Renderings and floor plans are representative likenesses of our homes and may differ from the actual homes. We invite you to tour a Home Center near you and inspect the highest value in quality housing available or call (281) 351-5856 to speak with a Home Consultant. Copyright 2017, CMH. All rights reserved.

<https://www.claytonhomestomball.com>

CLAYTON HOMES-
TOMBALL

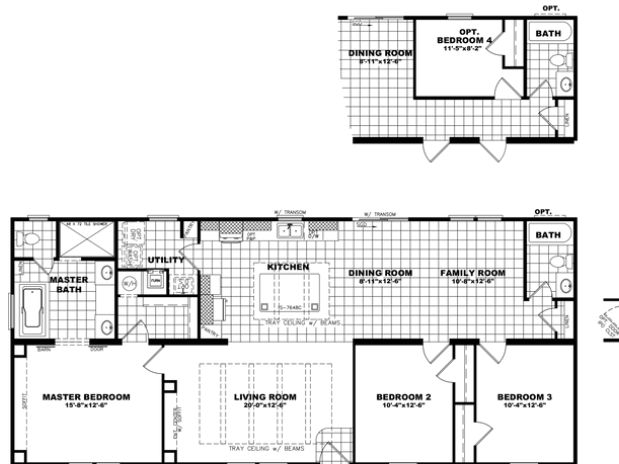
27225 TOMBALL PKWY
TOMBALL, TX 77375

Monday - Thursday: 9am - 5:30pm
Friday: 9am - 5:30pm
Saturday: 9am - 5pm
Sunday: Closed

(281) 351-5856



THE ANNIVERSARY 3.0



ANNIVERSARY 3.0

Model #: ANN28603A
Drawing #:
32M454

THE ANNIVERSARY 3.0 Model number:

3 beds • 2 baths • 1580 sq.ft. • 28' width • 60' depth

Our home building facilities invest in continuous product and process improvements. Plans, dimensions, features, materials, specifications and availability are subject to change without notice or obligation. Renderings and floor plans are representative likenesses of our homes and may differ from the actual homes. We invite you to tour a Home Center near you and inspect the highest value in quality housing available or call (281) 351-5856 to speak with a Home Consultant. Copyright 2017, CMH. All rights reserved.

<https://www.claytonhomestomball.com>

CLAYTON HOMES- TOMBALL

27225 TOMBALL PKWY
TOMBALL, TX 77375

Monday - Thursday: 9am - 5:30pm
Friday: 9am - 5:30pm
Saturday: 9am - 5pm
Sunday: Closed

(281) 351-5856